

NRHEG Facility Planning

Task Force Meeting #1

April 12, 2018

Presented to Facility Planning Task Force

Welcome / Introductions / Agenda

- Board member JoAnn Maloney
- Superintendent Dale Carlson
- Introductions
- Agenda Overview
- Task Force Development Process by Board
 - Engagement
 - Representation
 - Open Minded
 - Commitment to School District and Communities

Task Force Team

- 13 community at-large members representing all 4 communities
- 8 parents representing both schools and all 4 communities
- 2 students representing 900 students throughout the school district
- 13 staff members representing both schools and district-wide operations

Task Force Purpose – Role & Responsibility

1. Advisory to Board of Education (BOE)
2. Recommendation to BOE
 - Examine data and information
 - Development of Community Survey
 - Analyze survey results
 - Develop recommendation to BOE including priorities and funding sources

Historic Data and Review

- 2015 Referendum question & result
- 2016 Community Survey
- Strategic Plan
- Facility Assessment
- Educational Programming Needs
- Overview of Board Work Sessions

2015 Referendum Question & Results

Shall the school board of Independent School District No. 2168 (N.R.H.E.G.) be authorized to issue its general obligation school building bonds in an amount not to exceed \$14,255,000 to provide funds for the acquisition and betterment of school sites and facilities, including the construction and equipping of a gymnasium and related facilities addition to the secondary school facility; the remodeling, repair, equipping and upgrading of the secondary school facility, including the improvement of theatre space and the renovation of music/band spaces, science laboratories and locker rooms; the remodeling, repair, equipping, upgrading, renovation and construction of additional classroom space and safety, security and various other improvements to the elementary school facility; and the completion of site work and parking improvements at the elementary and secondary school sites?

Results: Yes – 378 (36%) No – 670 (64%)

2016 Community Survey

- The community survey was conducted in January of 2016
- Residents within the District were mailed a paper survey. Each survey included a unique survey access code for those who preferred to take the survey online.
- Total responses = 509/196 paper
- Total group response rate = 21%
- Margin of error for the full sample +/- 4.4%

2016 Community Survey

Priorities

- Preparing students for life after high school including college and/or career
- Recruiting and retaining high-quality staff
- Maintaining small class sizes
- Increasing student achievement in literacy
- Maintaining and/or improving school facilities

2016 Community Survey

Curricular & Skill Area Priorities – Most Important:

- Preparing students for after high school
- critical thinking & problem solving skills
- communication skills
- personal finance
- reading/writing showed the greatest gaps between what is believed to be most important and how the School District is doing.

2016 Community Survey

2015 Referendum Result:

- 37% of survey respondents voted 'yes'
- 41% of survey respondents voted 'no'
- 22% of survey respondents did not vote
- 77% of survey respondents feel District should address facility needs within 1-5 years
- Majority of survey respondents believe the BOE should explore a referendum to update schools

2016 Community Survey

Survey Respondent Priorities:

- Adding and remodeling classrooms including Science labs
- improving school security
- improving air quality through dehumidification

2016 Community Survey

Majority of respondents who were not in favor of the June 2015 referendum identified the proposal for a new gymnasium and the tax impact as important to their decision

Strategic Plan 2016-2021

- 30 member community strategic plan committee
- March – May 2016
- Beliefs, Vision, Mission, Focus Areas, Objectives

Strategic Plan – District Beliefs

- Challenging all students to reach potential
- Education is collaborative partnership
- Support staff with resources
- System of personal accountability
- Comprehensive educational program
- Safe, respectful, & caring environment
- Operate & maintain efficient & secure facilities

Strategic Plan Mission and Vision

Our Mission – What is our purpose?

Empowering students with knowledge and skills to succeed.

Our Vision – What do we want to be?

To be the school district of choice, inspiring excellence in academics, arts, and activities.

Strategic Plan Focus Areas

- **Student Achievement**
- **Student Support**
- **Facilities**
- **Workforce**
- **Communication & Marketing**
- **Finance**

Strategic Plan Facilities Goal

Ensure that the facilities and infrastructure of the school district are designed to optimize staff performance and student learning in a safe, sustainable, and attractive environment.

2017 Facilities Assessment

Purpose:

- Planning for maintenance and improvements to school facilities
- Informing residents of facility needs
- Prioritizing long and short-term projects
- Developing strategies for financial planning
- Developing and enhancing a 10-year facilities maintenance plan

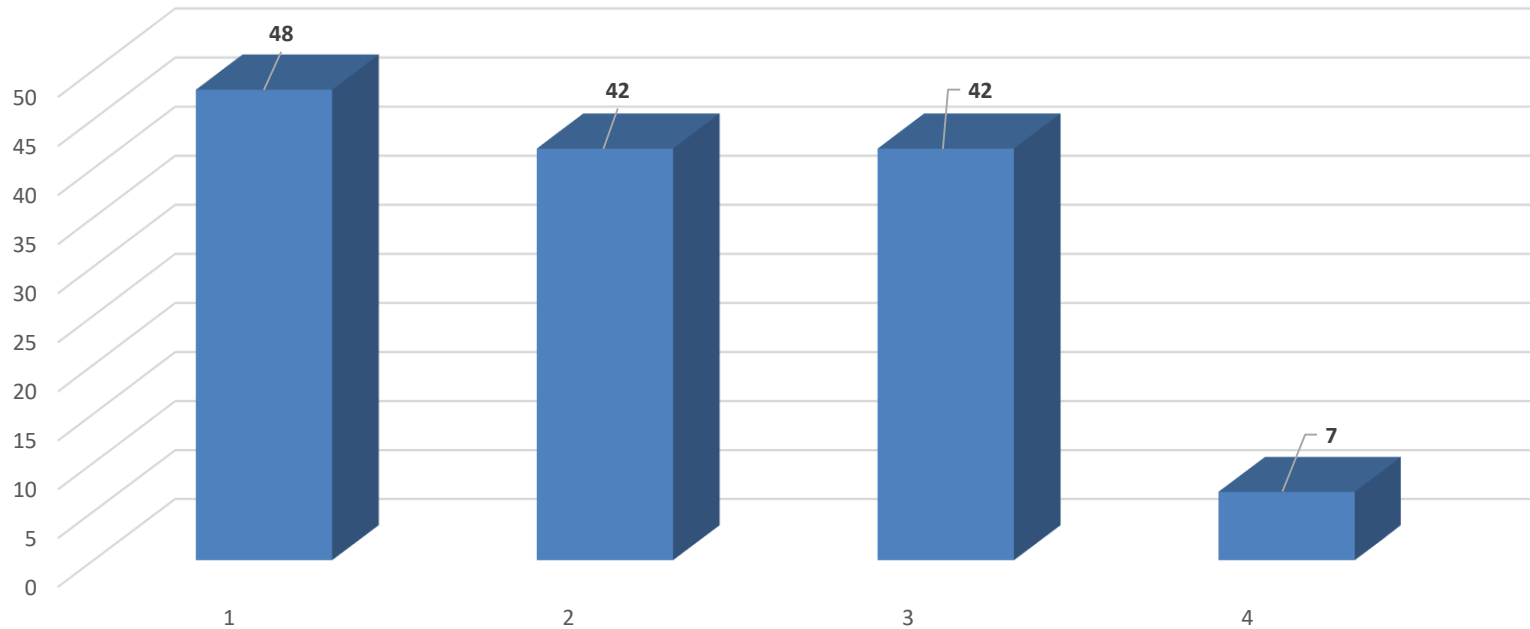
2017 Facilities Assessment

Scope:

• Site Conditions	• Accessibility Conditions
• Exterior Building Conditions	• Plumbing System Conditions
• Interior Building Conditions	• Mechanical System Conditions
• Structural System Conditions	• Electrical System Conditions
• Life Safety Conditions	• Technology Conditions
• Hazardous Material Conditions	• Security Considerations
• Curriculum Review	• Educational Adequacy

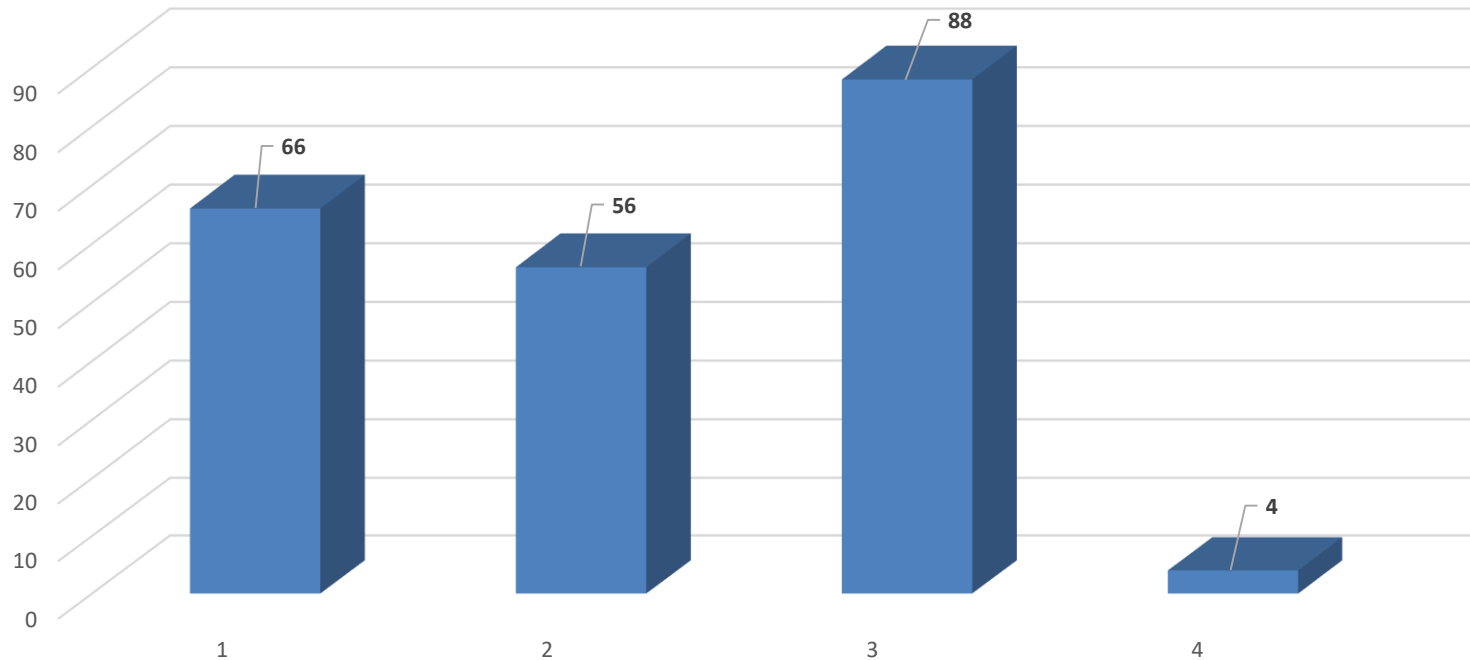
2017 Facilities Assessment

Elementary School
Number of Priorities



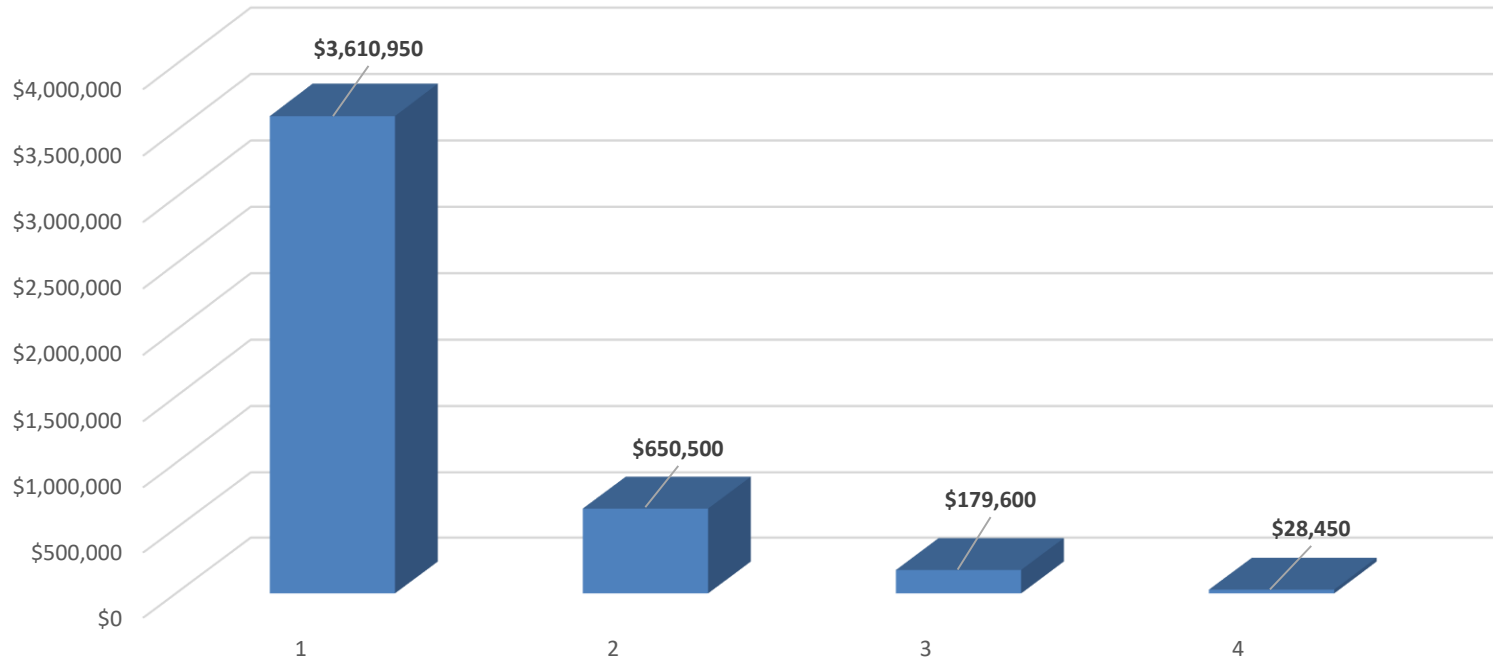
2017 Facilities Assessment

Secondary School
Number of Priorities



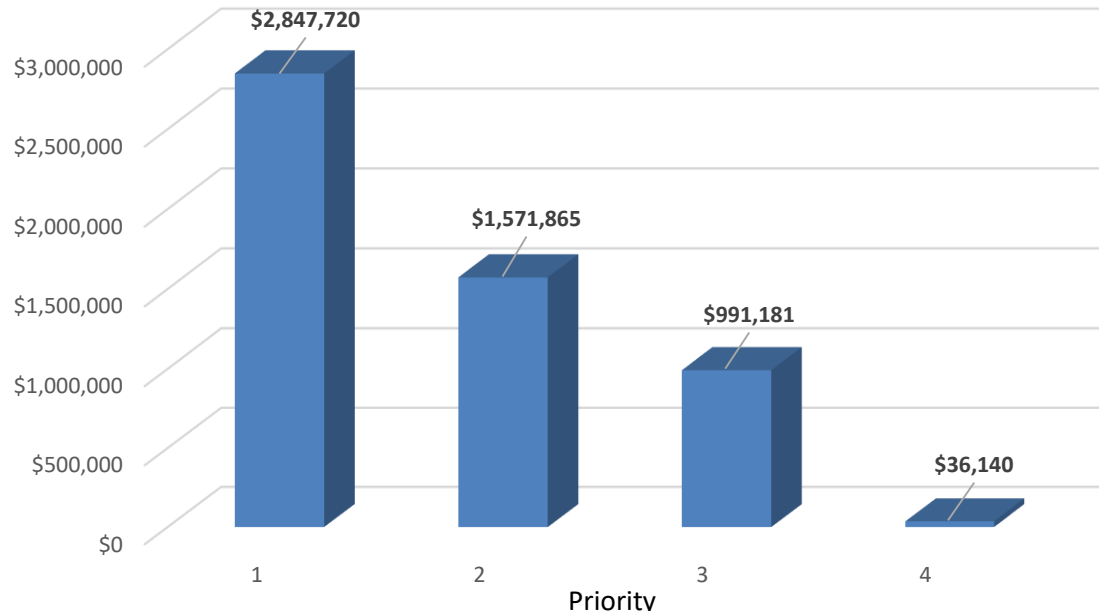
2017 Facilities Assessment

Elementary School Priorities by Dollar Value

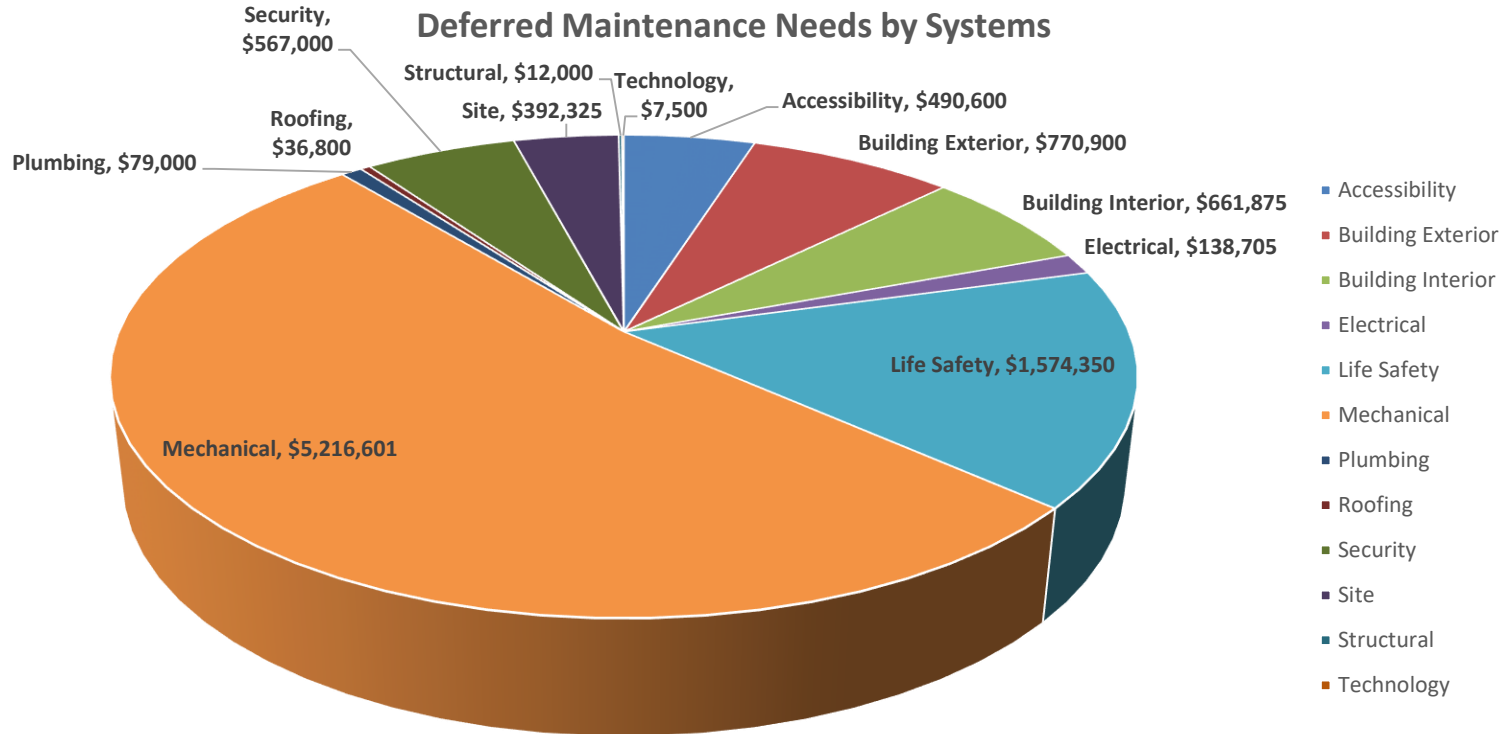


2017 Facilities Assessment

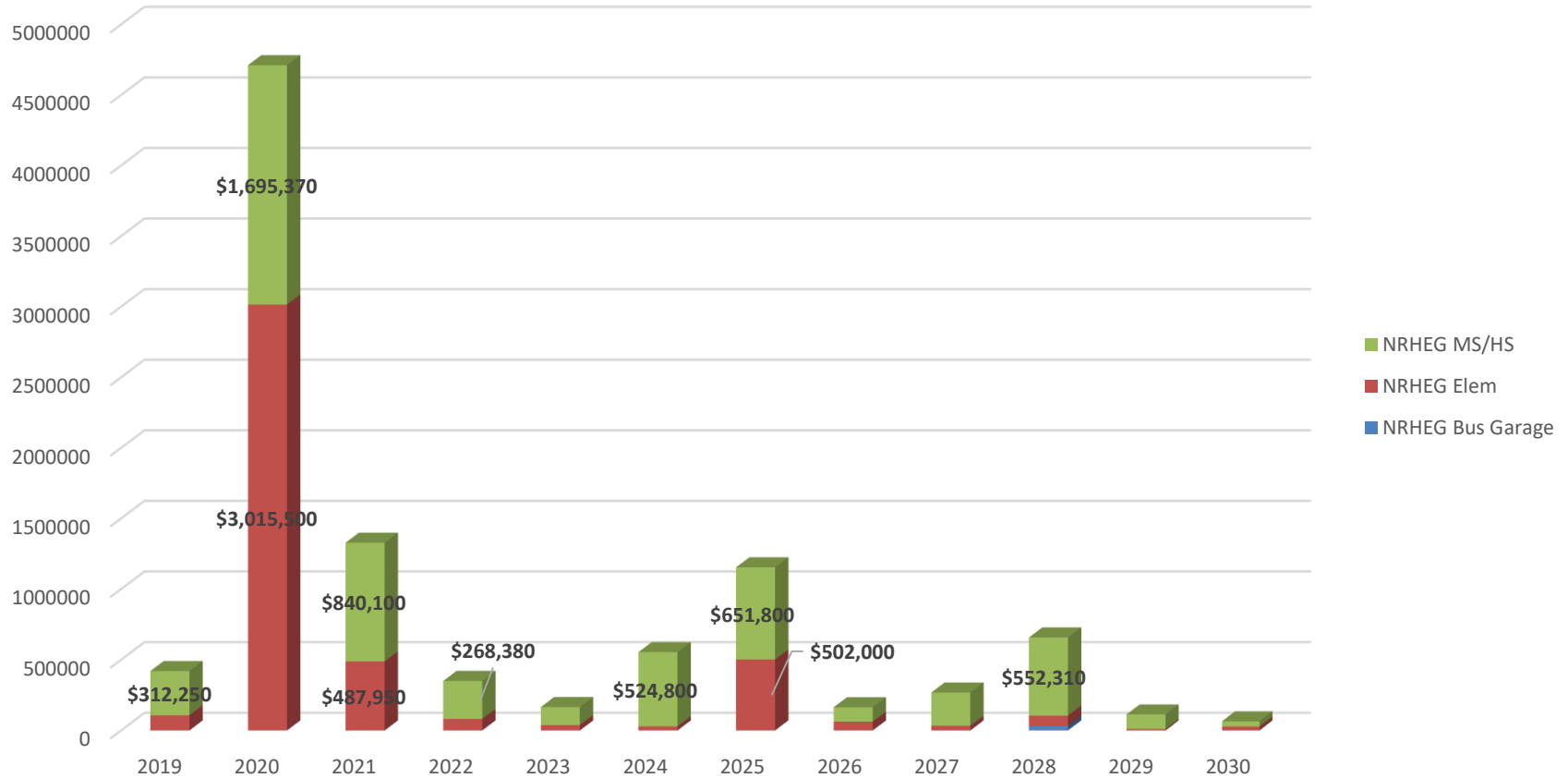
Secondary School
Priorities by Dollar Value



2017 Facilities Assessment



2017 Facilities Assessment



2017 Facilities Assessment

FACILITY	IDENTIFIED NEEDS	REPLACEMENT COST	FCI
Elementary School	\$4,469,500	\$23,642,500	18.90
Secondary School	\$5,446,906	\$28,900,000	18.85

Facility Condition Index Rating

Greater than 30	POOR
15 – 30	FAIR
Less than 15	GOOD

2017 Facilities Assessment



2017 Facilities Assessment



Educational Programming Needs

- Elementary
- Secondary

- Community Education
- Activities

Overview of Board Work Sessions

- **September 20, 2017** – ISG presented overview of Facility Assessment (FA)
- **November 8, 2017** -- Board review of FA and determined next steps including Educational Programming Needs direction, prioritize maintenance needs, and develop sequence of events.
- **January 30, 2018** -- Reviewed data & information and started to develop priorities, timelines, and community engagement plan
- **February 15, 2018** – Identified priority needs; timeline of events; and developed community engagement plan focusing on Task Force.

Board Goals / Priorities

Meeting 1

- Improve Security at each Facility

Meeting 2

- Provide School Readiness (Panther PreSchool) to all NRHEG Community Member Families at No Cost
- Respond to Curriculum and Learning Needs
- Improve curriculum related to Fine Arts programs
- Resolve Space and Safety related concerns with Career and Technology Education (CTE) Shop Area and Classroom Space needs

Meeting 3

- Resolve Disabled Access and Exiting code compliance issues for lower level of Secondary School
- Address Physical Condition needs at Facilities including improvements to achieve indoor air quality standards

Goal-Improve Safety & Security

- What does a secure school look like?
- What would the impact be on our present facilities?
- What might the cost impact be?
- How should the school district pay for changes?

Next Steps

- Set next meeting date(s) – doodle poll?
 - Meeting #2
 - Meeting #3
 - Meeting #4
 - Meeting #5
- Focus for next meeting – Programming
- Homework – Review information including Website
- Questions?

Plus / Delta

- Tool to provide feedback on our meeting
- “Plus” -- strengths . . . what went well?
- “Delta” -- OFIs . . . what needs improving?
- Meeting Pace
- General Comments